

Western Municipal Water District



AMWA - 2015 Executive Management Conference

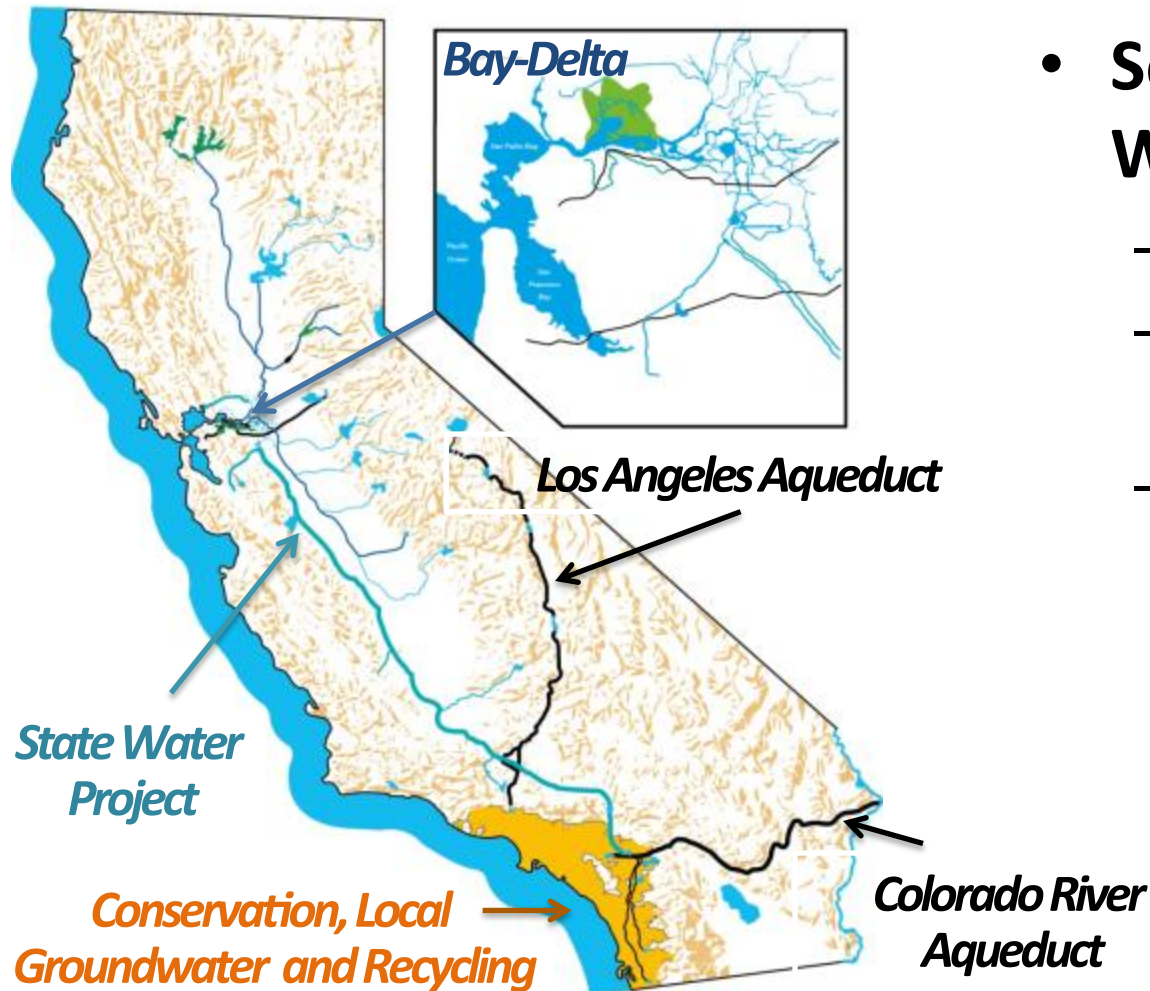
October 13, 2015

California Dreamin' (of Rain) – Managing the “Mega-Drought”

John V. Rossi
General Manager, Western MWD



Diverse Water Supplies



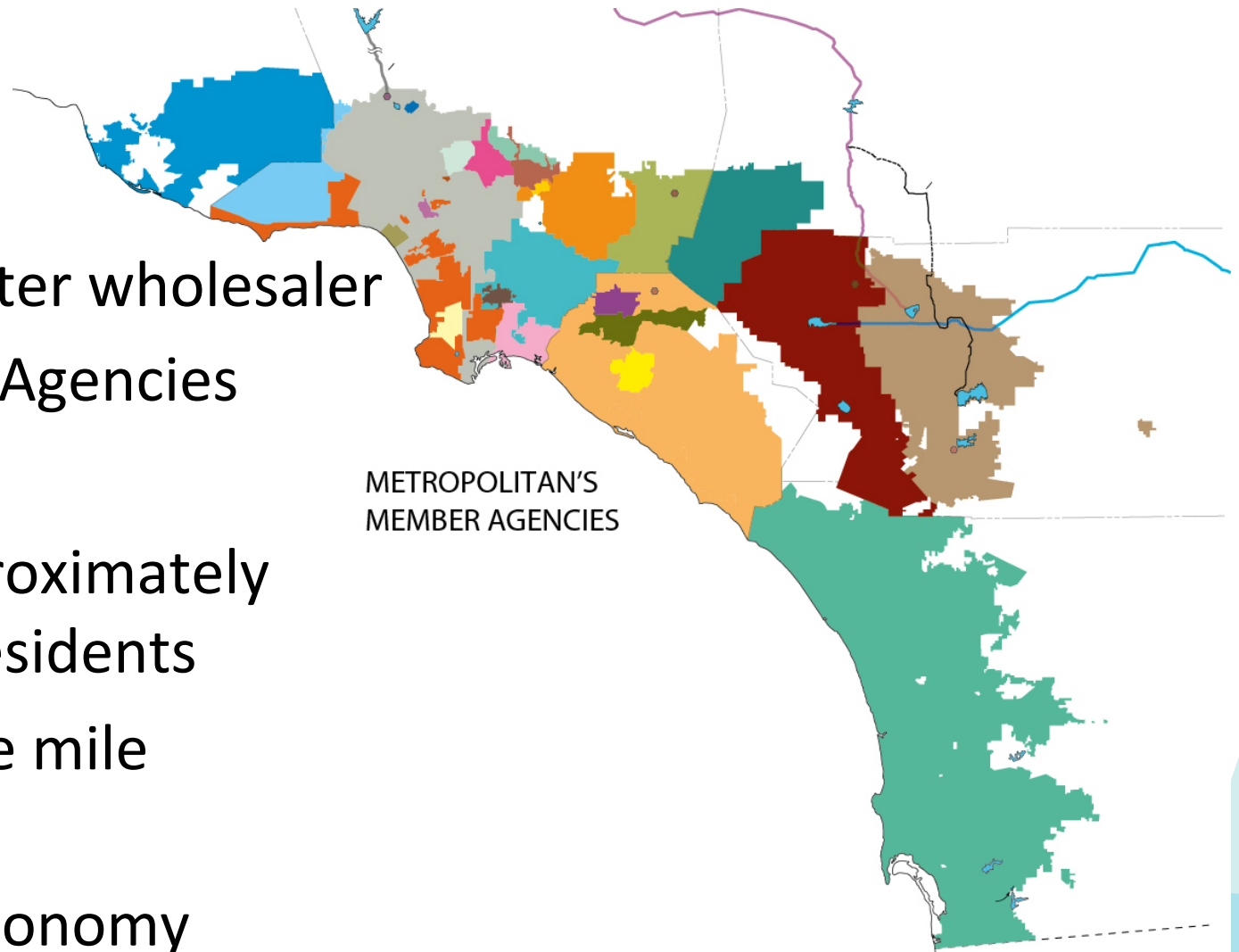
- **Southern California Water Portfolio**

- 25% Colorado River
- 30% State Water Project (through the Delta)
- 45% Local Supplies
 - Los Angeles Aqueduct
 - Conservation
 - Groundwater
 - Recycling
 - Desalination

Metropolitan Water District



- Regional water wholesaler
- 26 Member Agencies
- 6 counties
- Serving approximately 19 million residents
- 5,200 square mile service area
- \$1 trillion economy



Unprecedented Conditions



Water Year (WY) 2012-2013

Below average runoff

Calendar Year 2013

Driest on record

January 2014

Lowest snowpack

WY 2014

4th lowest runoff

2014 State Water Project Allocation

5% - lowest

2014 Temps

Record high temperatures

CA Drought – An Ongoing Water Crisis



***Governor Jerry Brown's April Snow Survey
(Or Lack Thereof)***

Governor's April 1 Executive Order B-29-15



- Statewide 25% reduction in water use from 2013
 - Higher per capita to achieve greater reductions
- Commercial, Industrial, Institutional (CII) reductions
 - Consistent with reduction targets of water supplier
- Prohibit turf irrigation in public medians
- Prohibit conventional irrigation in new construction
 - Drip or microspray irrigation
- Direct suppliers to develop conservation rate structures

Mandatory Actions by Water Suppliers

- Notify customers of known leaks
- Report monthly production information to State Board
- Reduce potable urban 32 percent (C.S.* Tier 8)
- Reduction must commence June 1, 2015
- Reductions measured monthly (15th of following month)
- Reductions assessed by State Board on cumulative basis

* *Conservation Standard*

WATER USE EFFICIENCY



- Implemented WUE Master Plan
- Programs - Turf Removal, Free Sprinkler Nozzles, Smart Irrigation Controllers, Demo Garden
- Budget Allocated Rate Structure
- Reduced GPCD 28% by 2013
- Outreach and education
- Challenges
 - Prior Credit, Climate Adjustment, Supply Side Investments

Monthly Progress Report



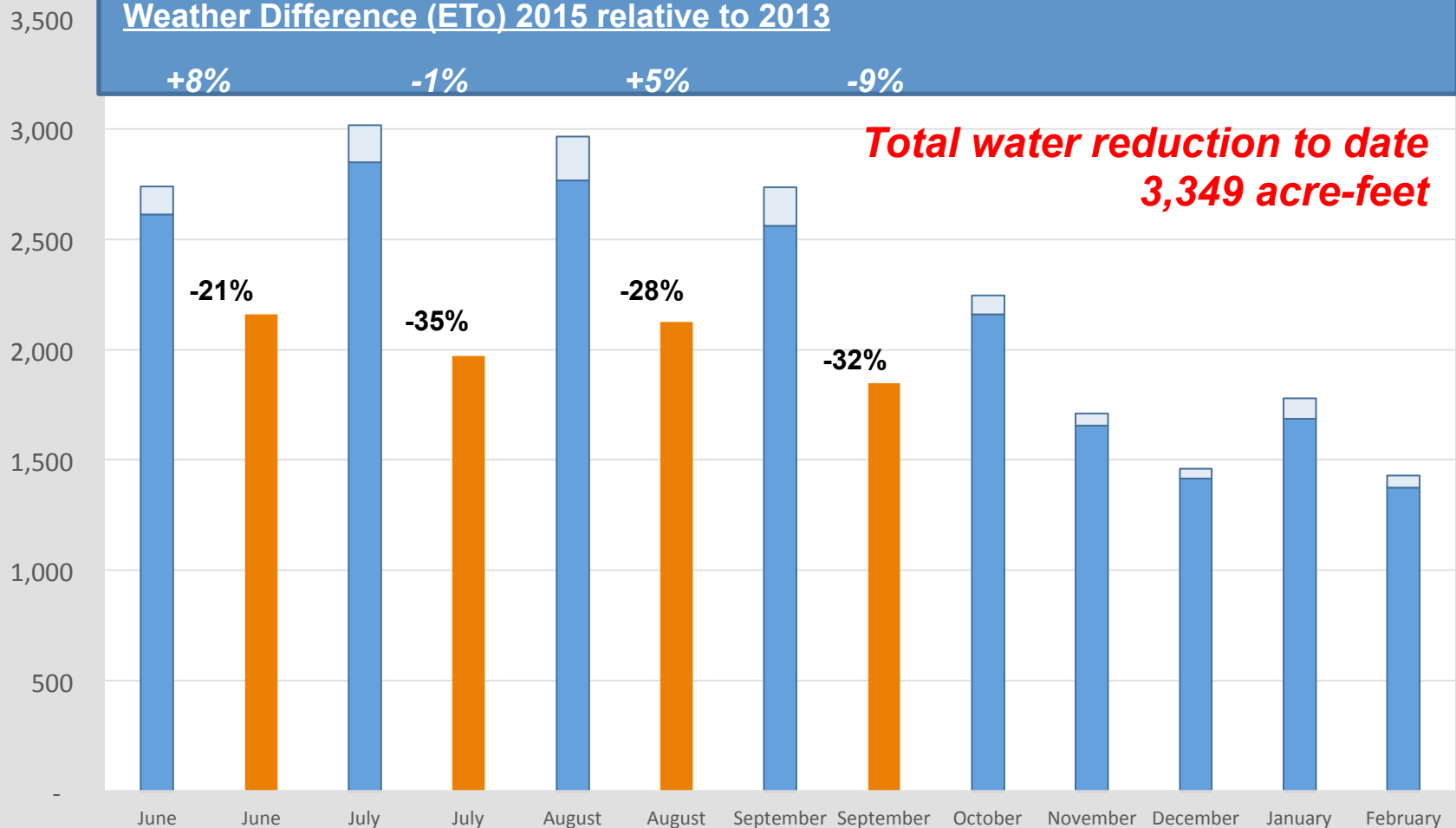
Preliminary

Western Retail
Potable Water Production

Weather Difference (ETo) 2015 relative to 2013

+8% -1% +5% -9%

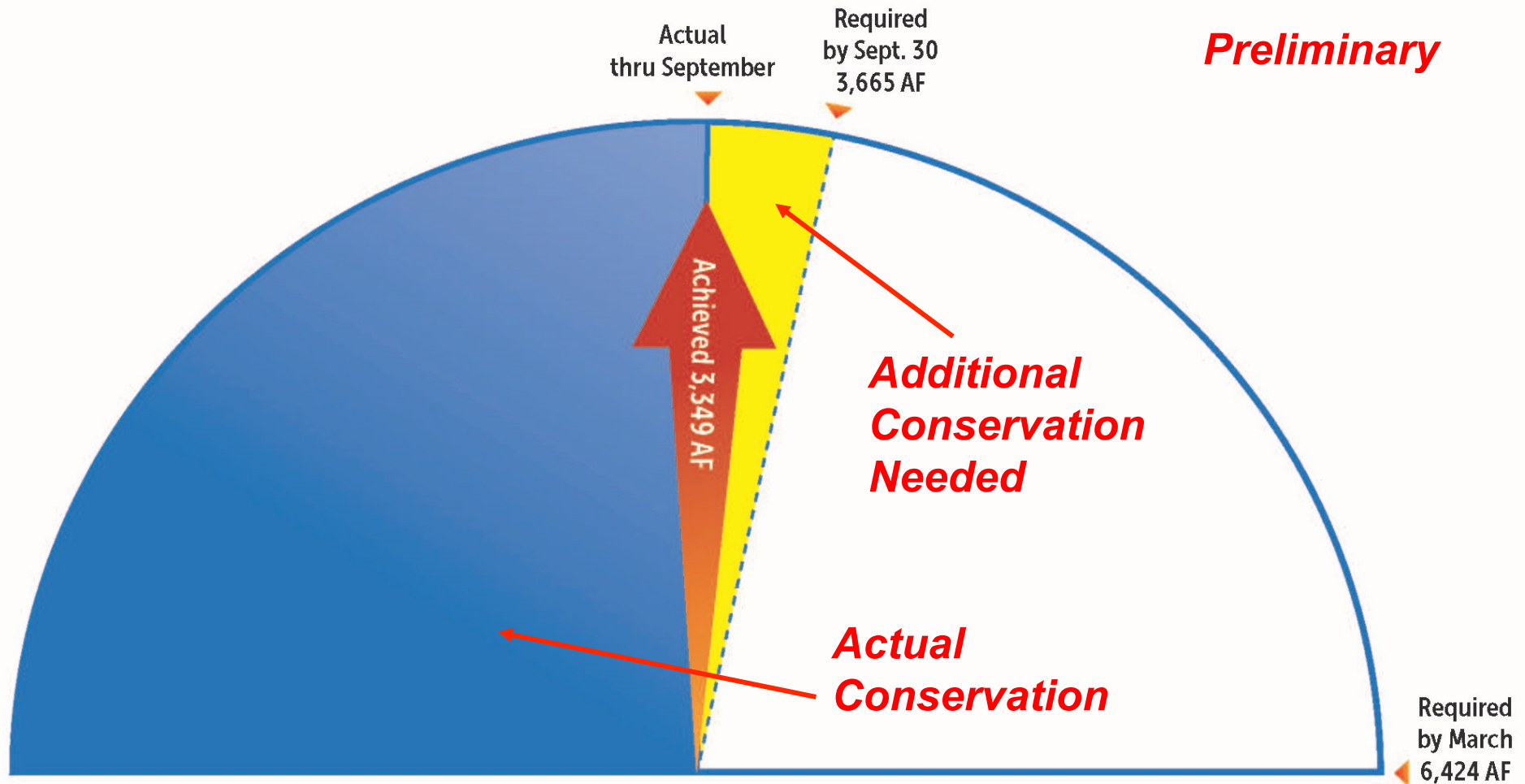
**Total water reduction to date
3,349 acre-feet**



■ 2013 Original Production □ 24D Increase ■ 2015

ETo = Evapotranspiration

Cumulative Progress Report



- Corrected 2013 production data (recalibration of WR-24D)
- Cumulative reduction to date is 29% (3,349 acre-feet)

QUESTIONS?