



AMWA 2017

Executive Management Conference

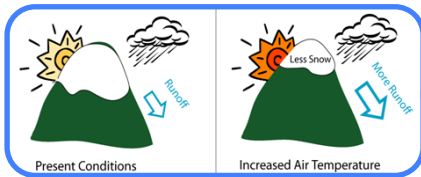
LA's Future Supply Reliability

October 16, 2017

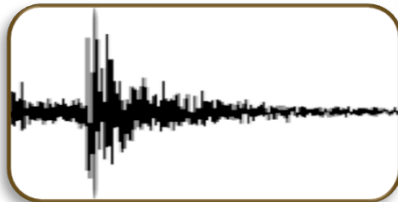
Richard F. Harasick, PE
Senior Assistant General Manager

Putting Customers First 

Water Supply & Reliability Challenges



Climate Change



Seismic Risk to Imported Supplies



Bay-Delta Uncertainty



**Local Groundwater:
Contamination in the San Fernando Basin**



**Los Angeles Aqueduct:
Supply reduction due to Owens
Lake dust mitigation**



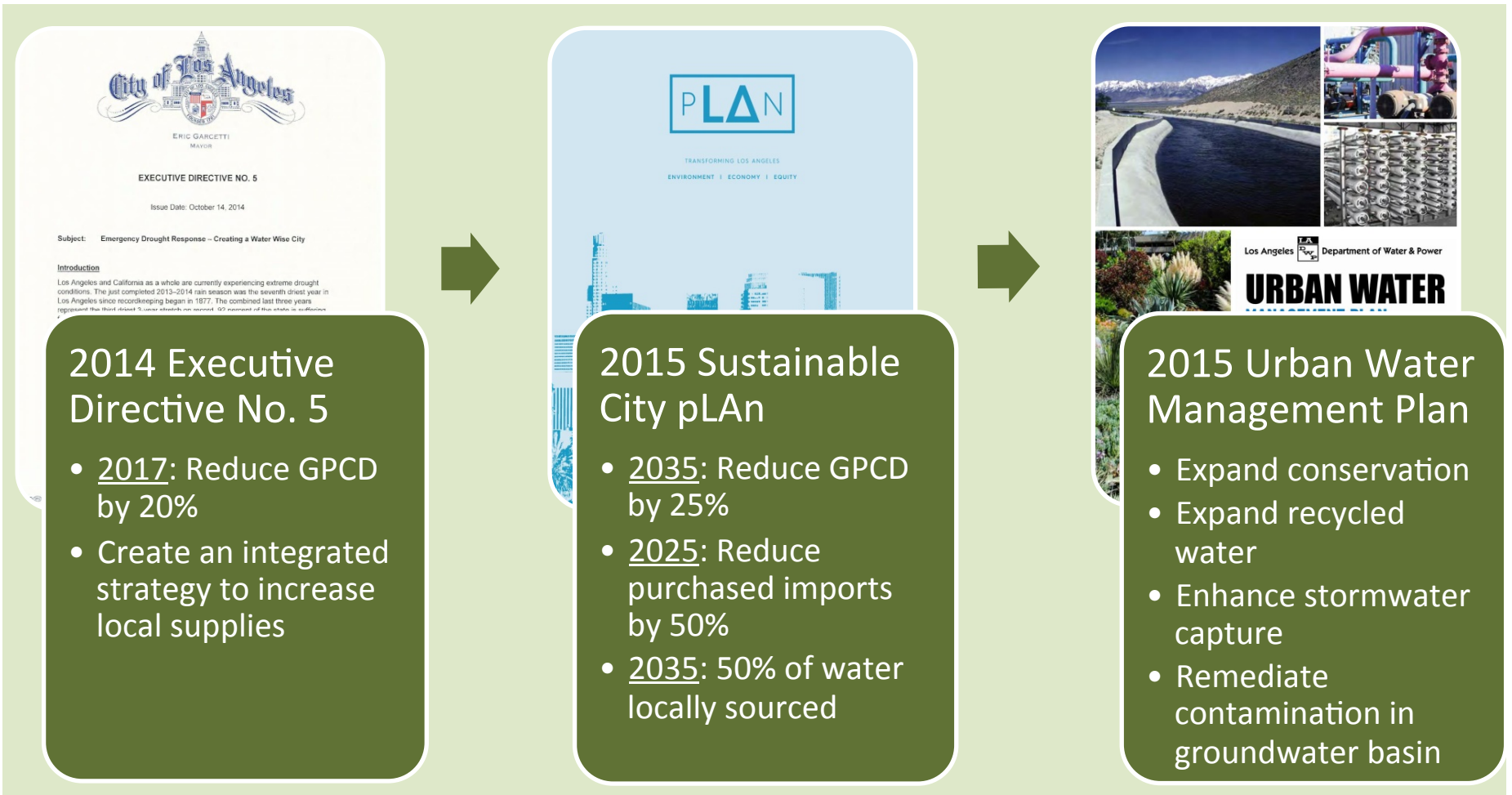
Colorado River Aqueduct



Rising MWD Water Costs

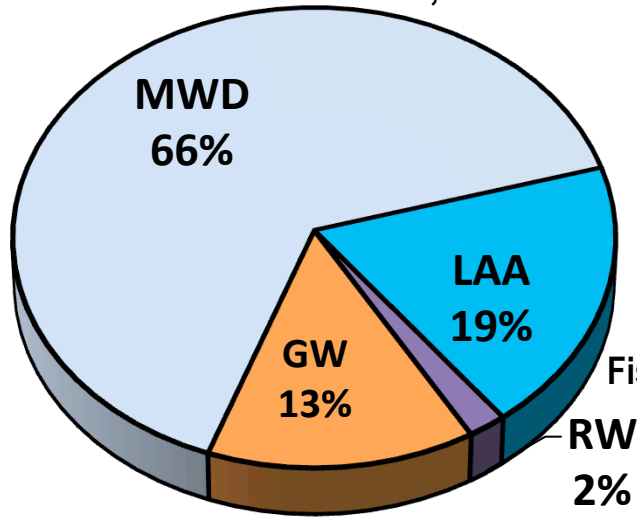


Local Water Supply Program Supports City's Sustainable Water Mandates

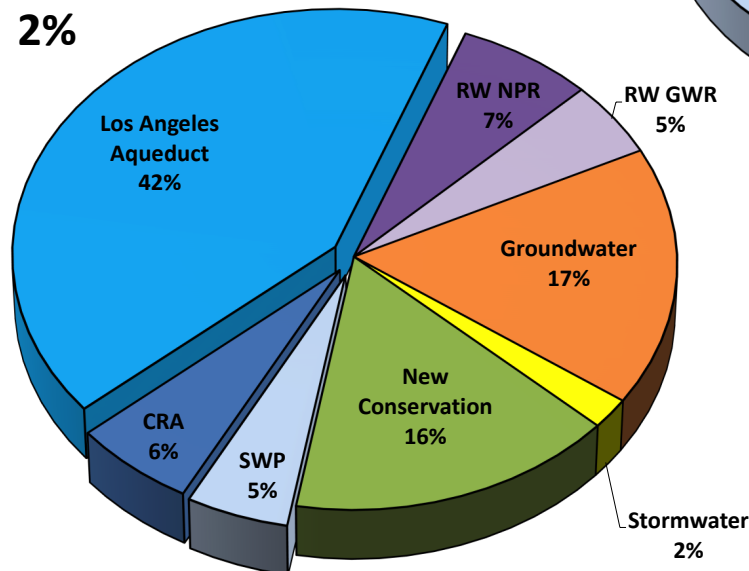


LA Water Supply Reliability

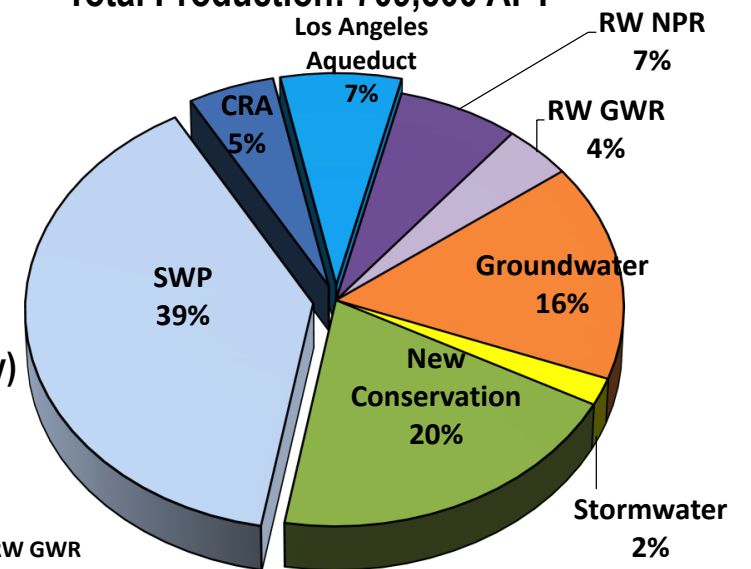
FY 2013-17 Actual
Total Demand: 532,598 AF



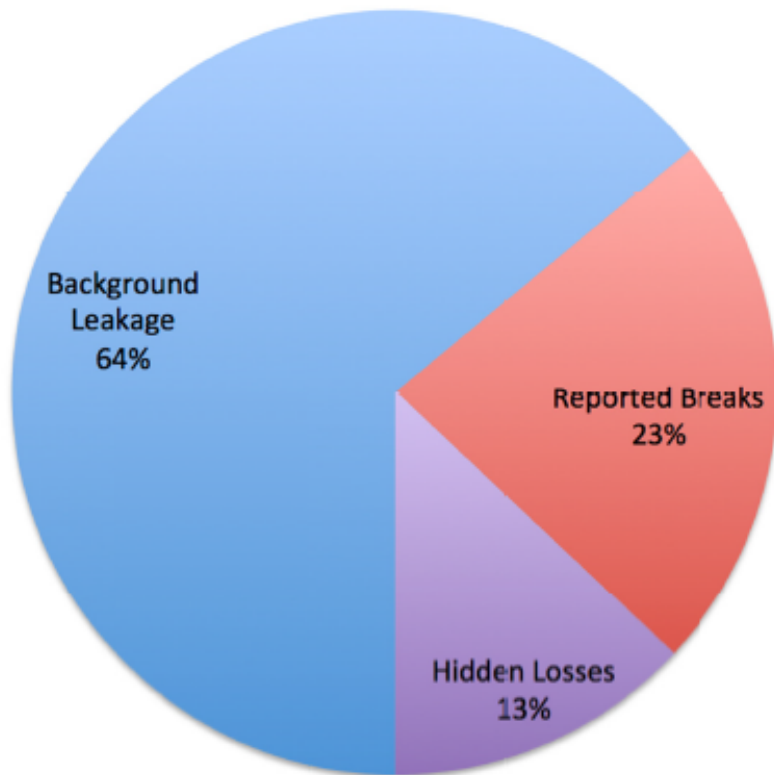
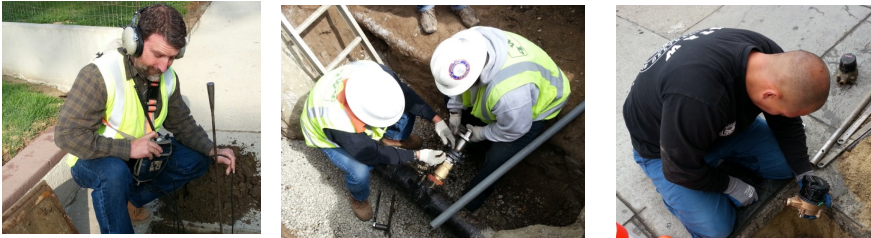
Fiscal Year 2039/40 (Average Hydrology)
Total Production: 675,700 AFY



Fiscal Year 2039/40 (Single Dry Year)
Total Production: 709,500 AFY



Water Loss Task Force



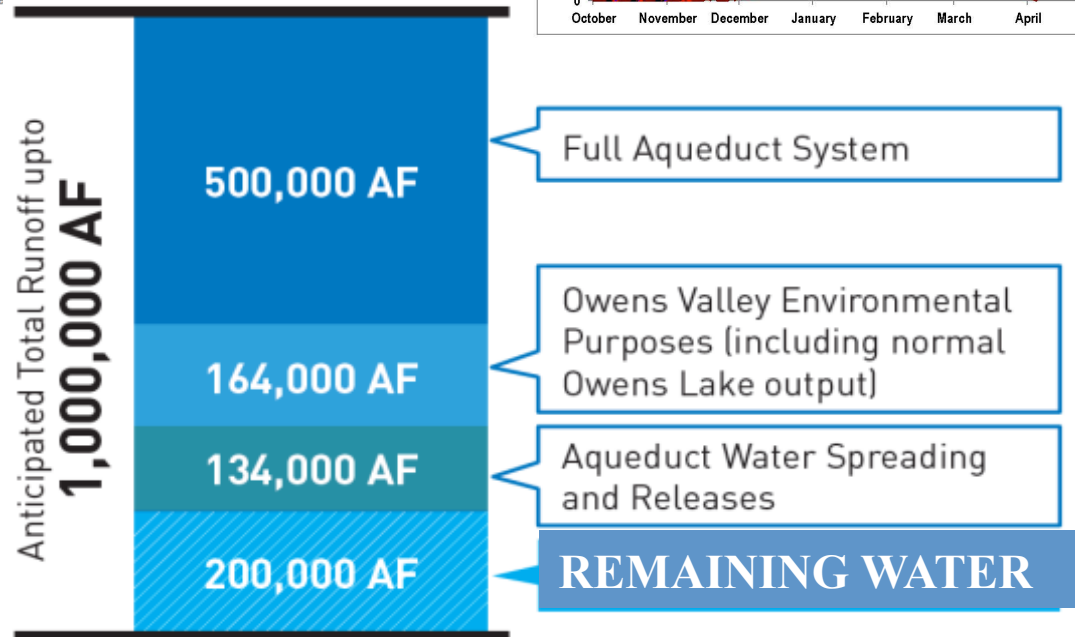
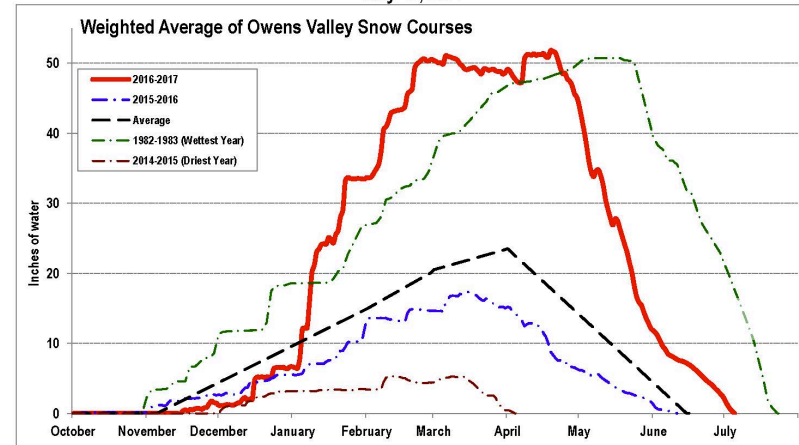
- **Majority is background leakage:**
 - Pressure management
 - Infrastructure renewal and rehabilitation
- **Some potential to reduce hidden losses:**
 - Active leak detection
- **Reported breaks:**
 - Reduce leak response time

Mayor's Emergency Proclamation – Los Angeles Aqueduct System Emergency



Mayor Eric Garcetti and representatives from the Los Angeles

EASTERN SIERRA
CURRENT PRECIPITATION CONDITIONS
July 10, 2017

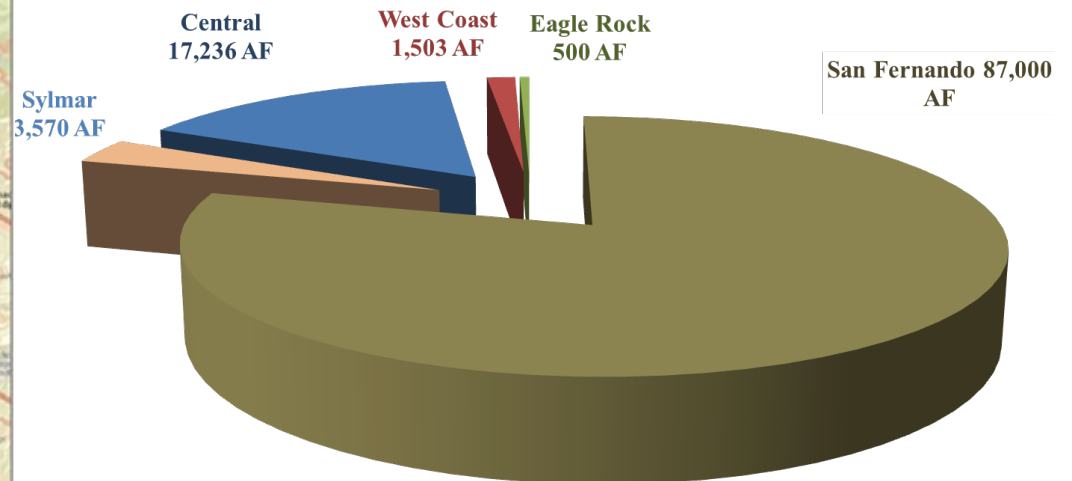
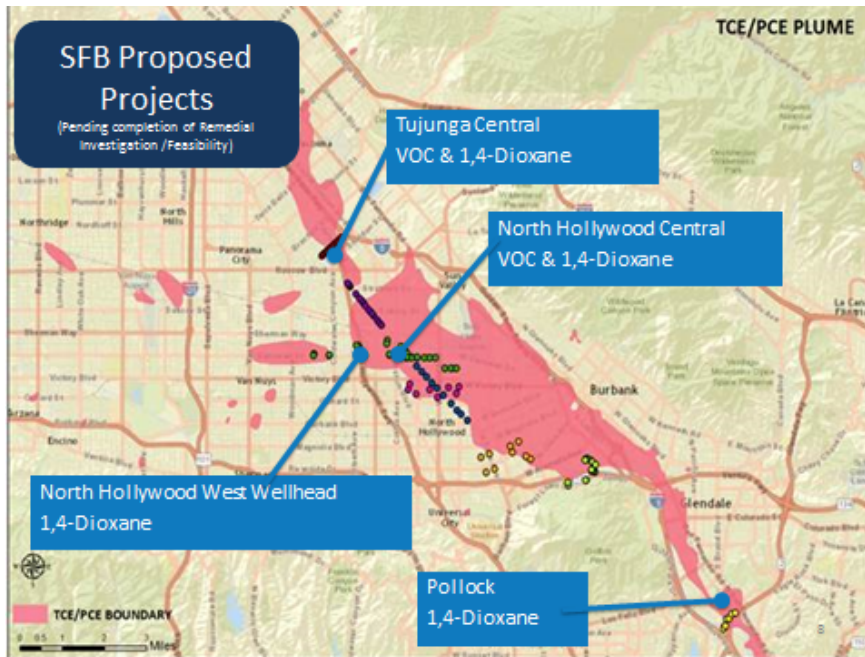


*Note: All numbers are estimates



SF Groundwater Basin Remediation

Planned groundwater basin remediation will be crucial to restoring the health and beneficial uses of the San Fernando Basin

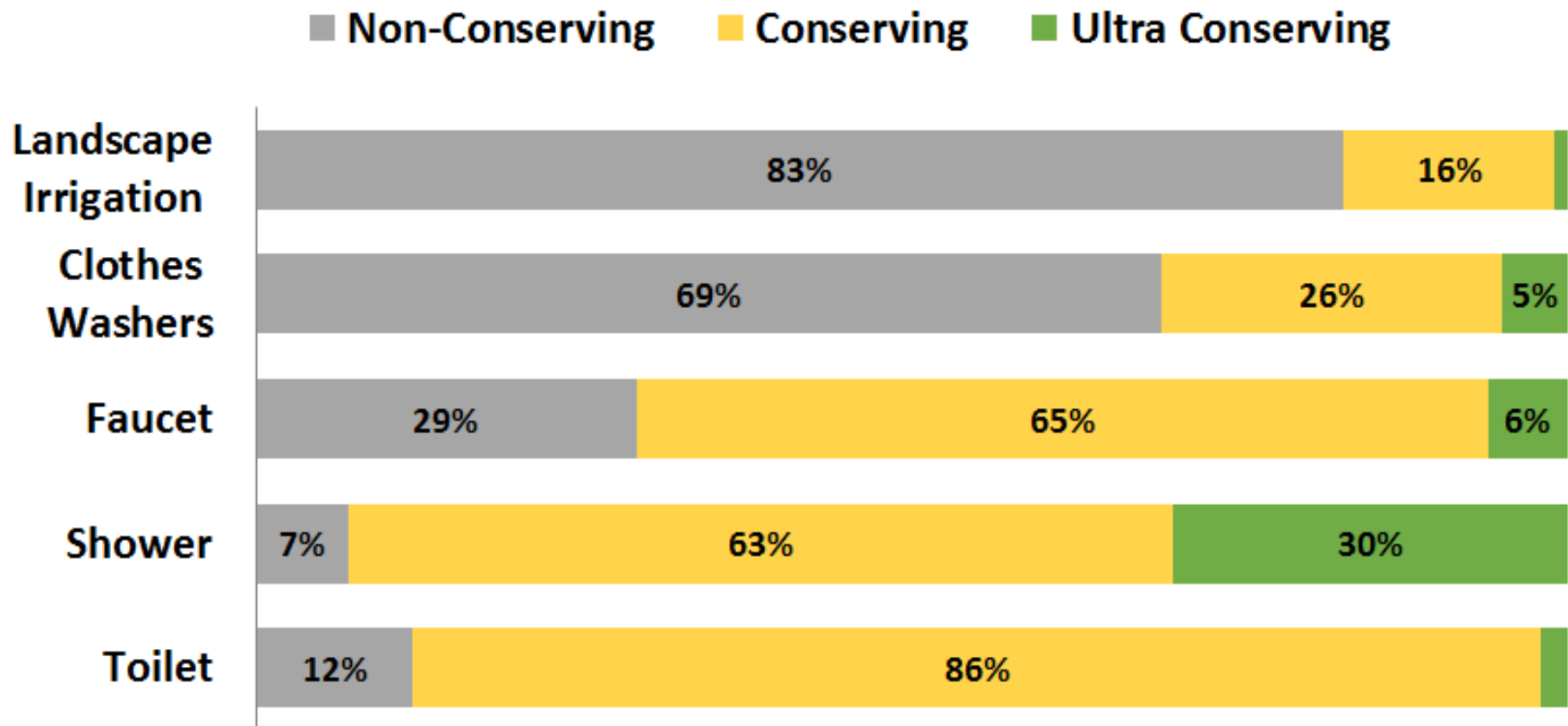


Total: 109,809 AFY



LA's Water Conservation Potential

Single-Family Residential Efficiency of End Uses



Securitization

- **Rate Reduction Bond**

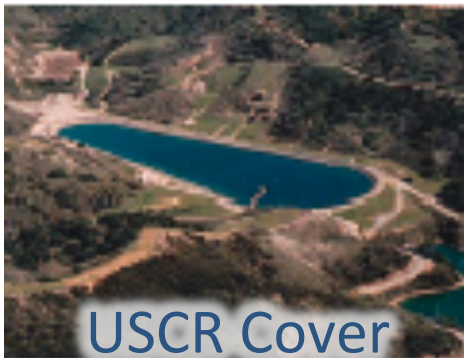
- Assembly Bill 850 (2013) provided a new mechanism for a Joint Powers Authority (JPA)
- Eligible Project Types
 - Water Quality
 - Conservation
 - Regulatory Obligations

- **Three Major benefits**

- Higher Bond rating due to reduced risk
- 1:1 debt service coverage reduces impact on customers
- Anticipated saving of 0.25% on interest rates

- **Notable Projects**

- Owens Lake
 - Dust Mitigation
- Upper Stone Canyon Reservoir
 - Floating Cover
- Trunk Line
 - Replacement of River Supply Conduit





Thank You

www.ladwp.com

