

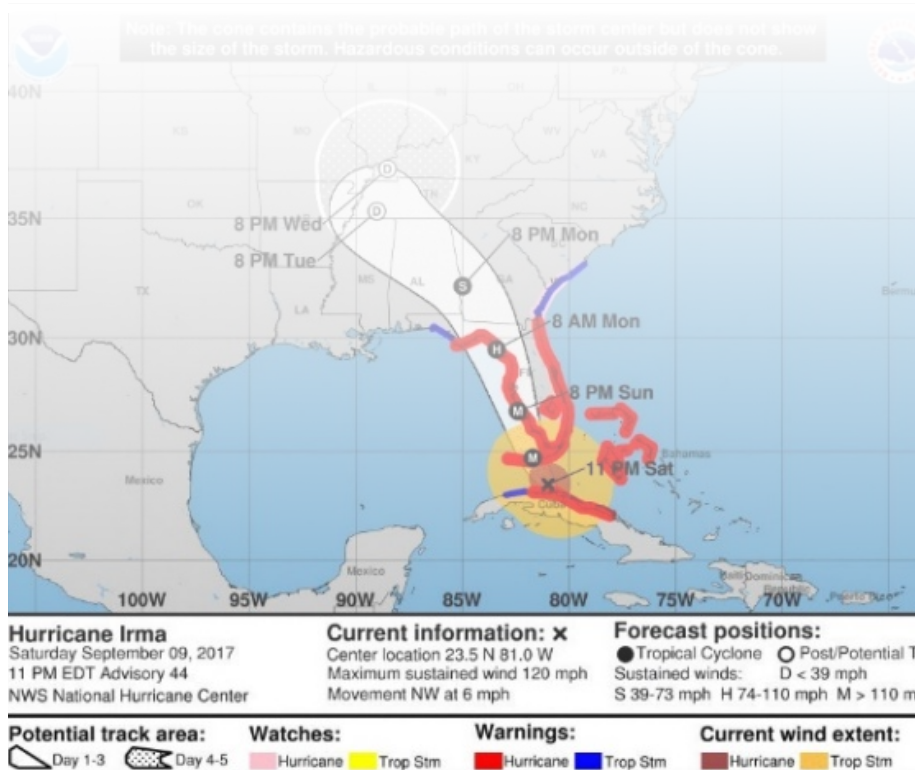


**Florida Keys
Aqueduct Authority**



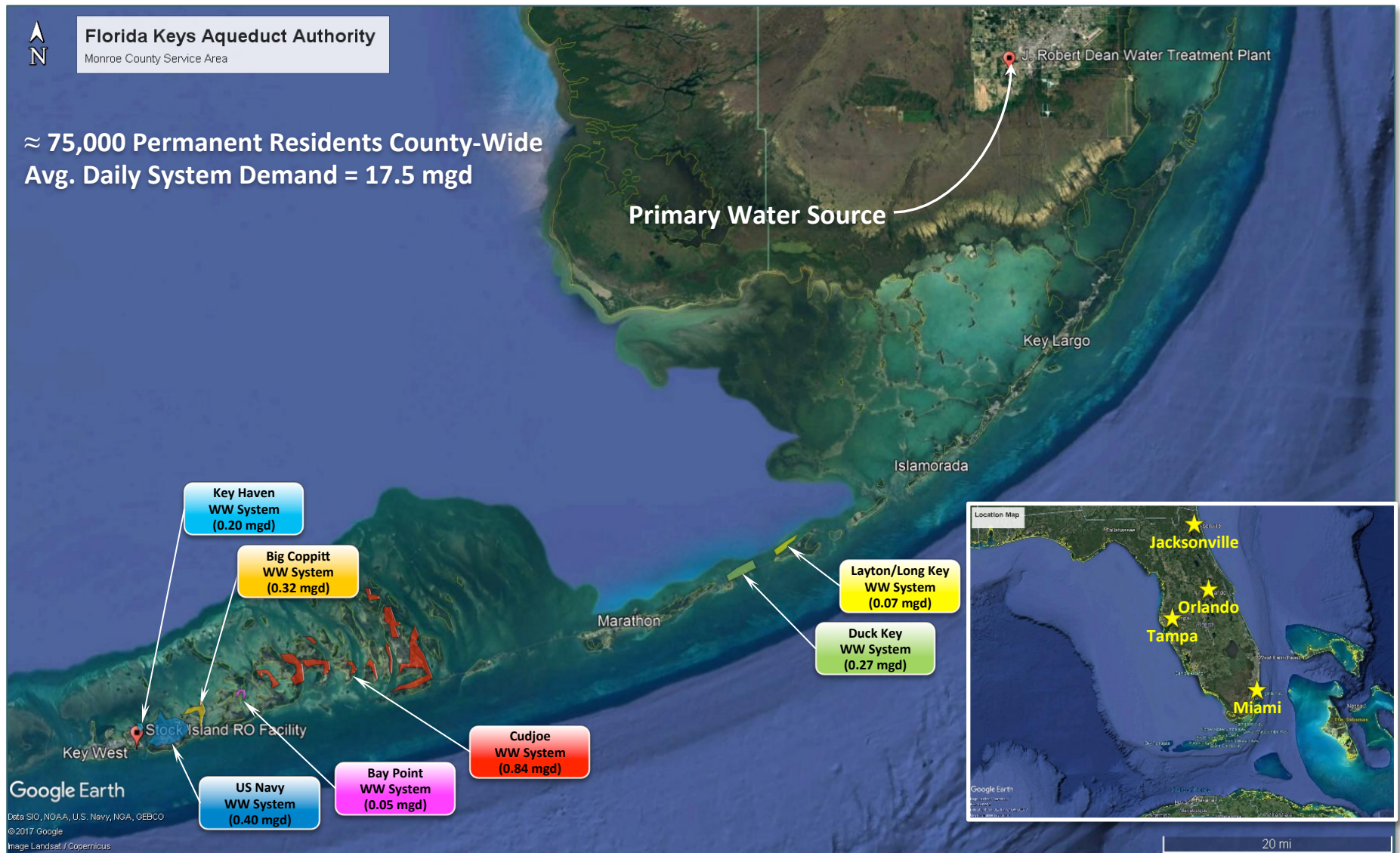
HURRICANE IRMA EXPERIENCES

19-MARCH 2018



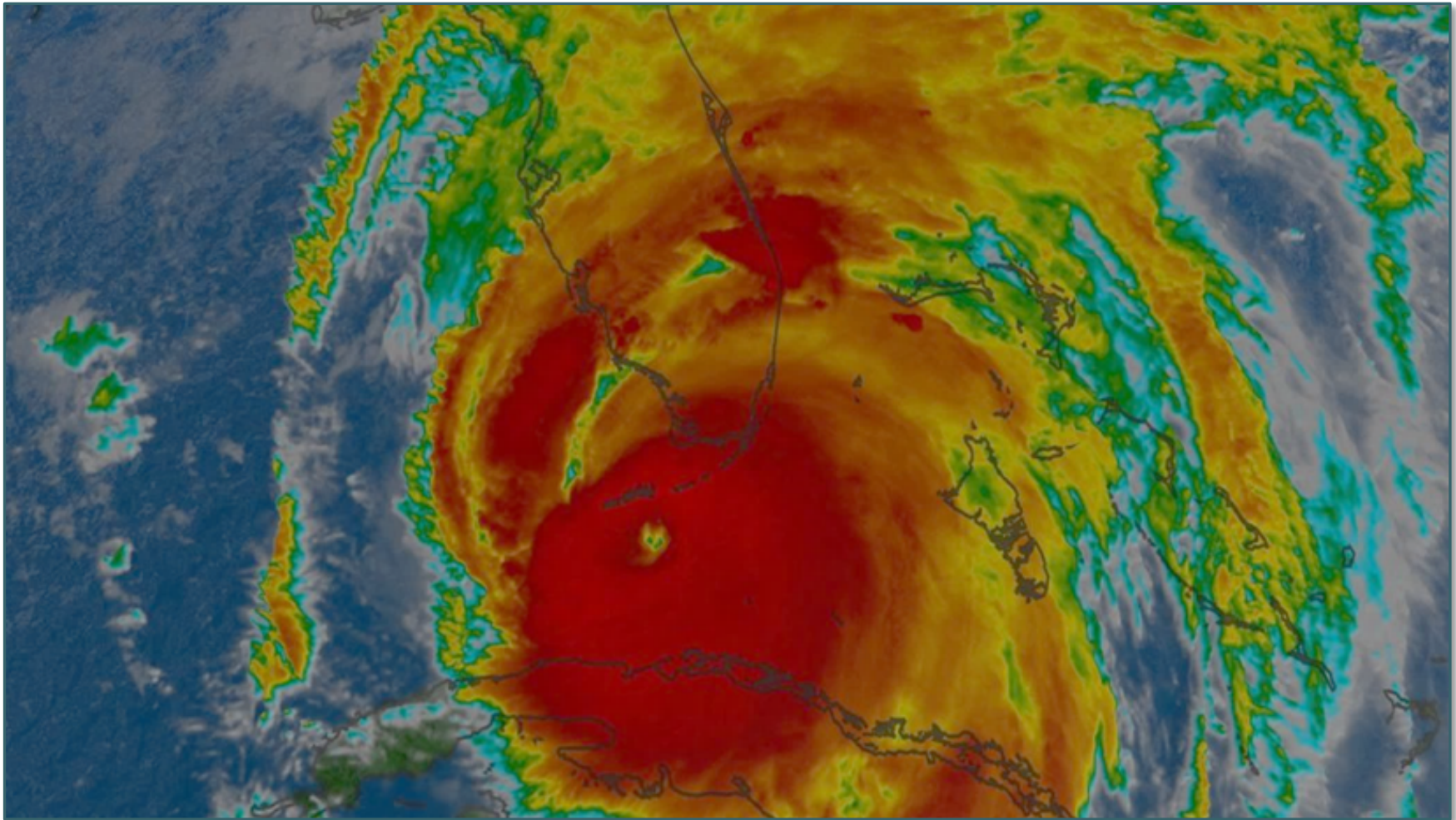
FKAA has a linear water system stretching almost 130 miles, and seven discrete central wastewater systems

2.



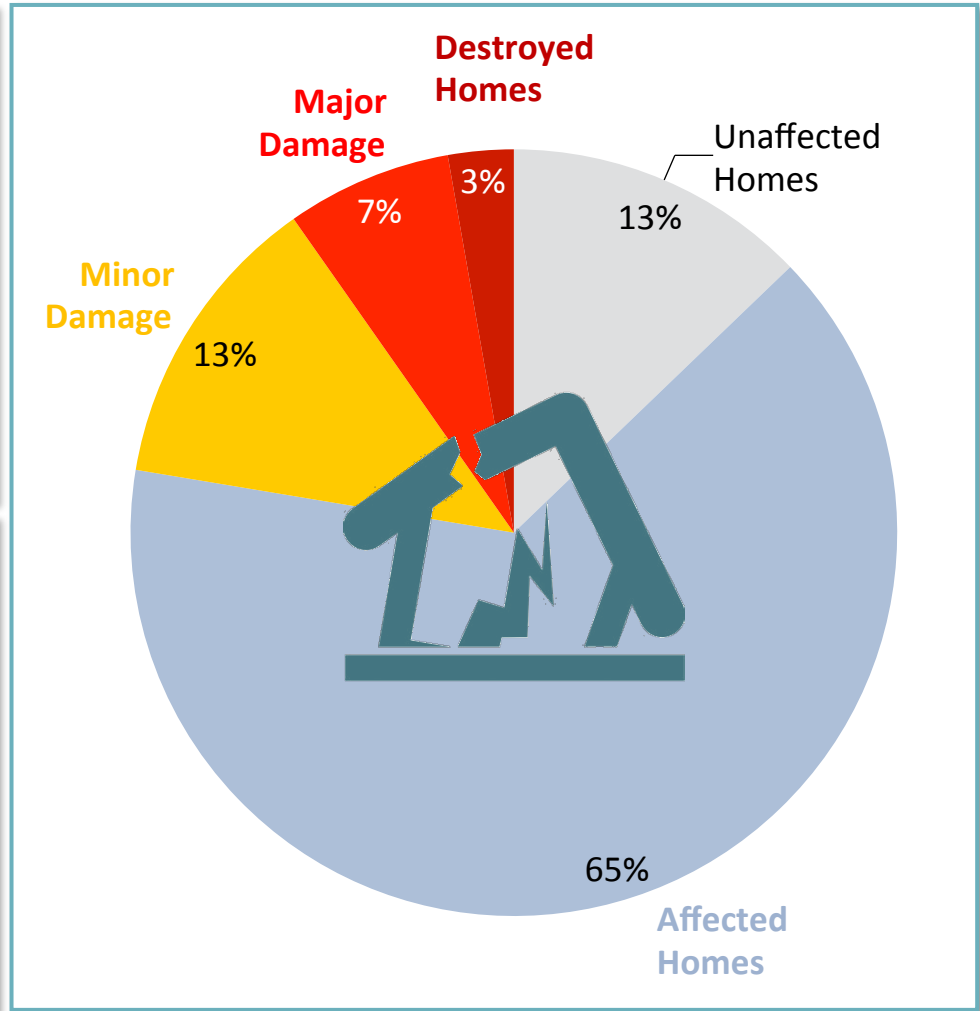
The effects of Irma were felt statewide...

4.



...and the Monroe County damage assessment indicate that most homes were affected by Irma

5.

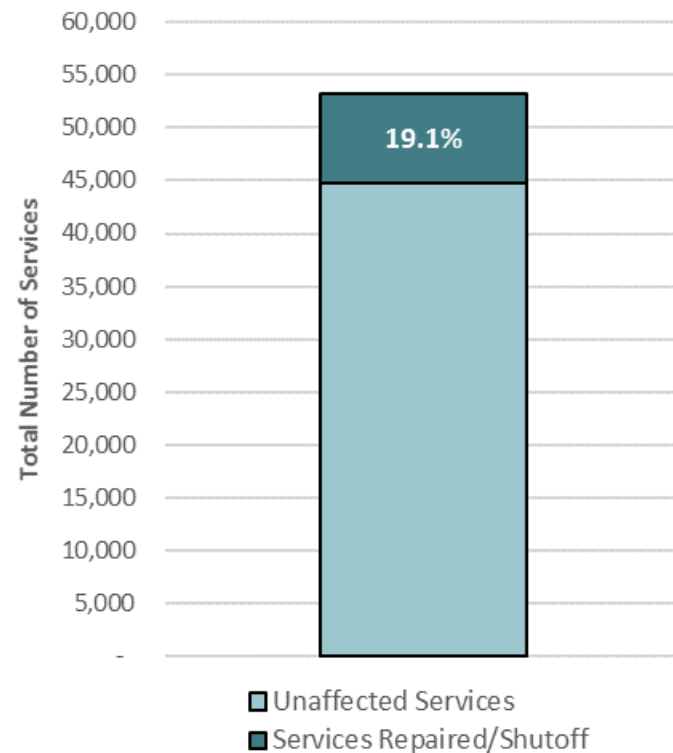


Despite no loss of integrity in the transmission system, significant effort was required to restore water service...

7.



Distribution System: Service Leak Repairs



**In Total: \approx 8,550
Services Repaired/Shutoff**



You cannot do it all yourself – we successfully utilized FLAWARN and EMAC, in addition to local contractors

8.



Onslow Water and Sewer Authority; Jacksonville, NC

- Crew of 6 – One deployment



Mount Pleasant Waterworks; Mt. Pleasant, SC

- Crew of 5 – Extended deployment



GreenvilleWater

Greenville Water; Greenville, SC

- Crew of 5 – Extended deployment



Renewable Water Resources; Greenville, SC

- Crew of 5 – Extended deployment



Metro Water Services; Nashville, TN

- Crew of 26 – Extended deployment



Jupiter Water Utilities; Jupiter, FL

- Crew of 10 – Extended deployment



Indian River Utilities; Vero Beach, FL

- Crew of 2 – One deployment



Miami Dade Water & Sewer; Miami, FL

- 2 Crews of 7 – Two separate deployments

THANK
YOU!

Follow-up workshops with staff identified specific areas for improvement

9.

Pre-Storm
Prep

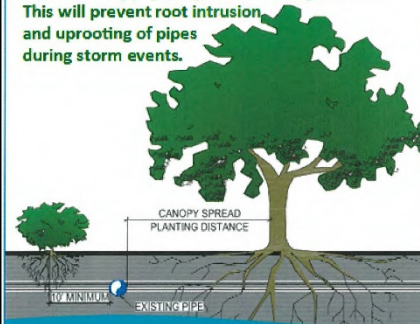
Harden the Distribution System: *Isolate system at the meter prior to storm, public campaign*



Protect Your Pipes!

Maintain Proper Planting Distances

- Planting sites should be a minimum of 10' away from the pipe or no closer than the edge of the mature canopy spread, whichever is greater. This will prevent root intrusion and uprooting of pipes during storm events.



Florida Keys Aqueduct Authority
fkaa.com (305) 296-2454

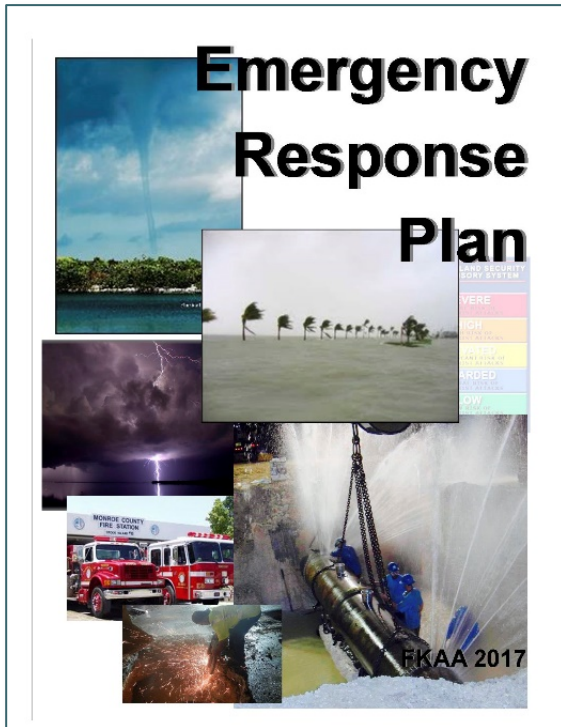


Follow-up workshops with staff identified specific areas for improvement (cont.)

10.

Post-Storm
Coordination

Tighten Up the ERP: *Update plan, provide refresher training, reevaluate evacuation protocols*



Follow-up workshops with staff identified specific areas for improvement (cont.)

11.

Accommodations

Food and Bunks: *Develop alternatives for both staff and outside support*



Follow-up workshops with staff identified specific areas for improvement (cont.)

12.

Communications

Utilize Reliable System(s): *Develop layered, storm-proof systems for both internal and external comms (including SCADA and telemetry)*



Any questions?

13.

